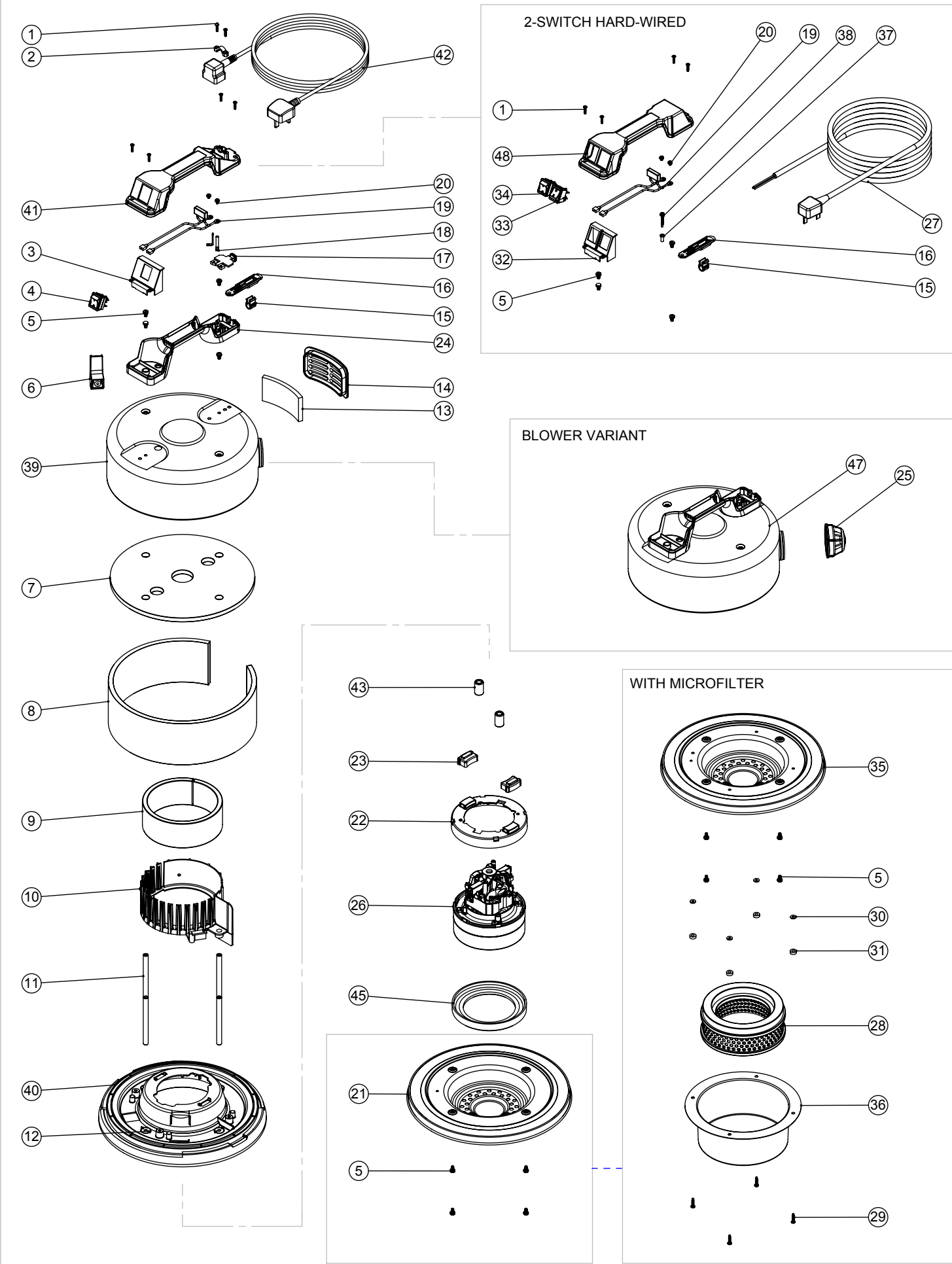


Numatic International Spare Parts

Model No: HEAD STYLE 7 ASSEMBLY 2 STAGE 1-SPEED EXPLODED

Models: NVQ, NQS, MFQ (2/3 CORE), DBQ, SSV

N/A
DRAWING: DRW-16987 ISS:A06
09/02/2018



Numatic International Spare Parts

Model No: HEAD STYLE 7 ASSEMBLY 2 STAGE 1-SPEED EXPLODED

ITEM:	PART No:	Description	QTY.	COMMENTS:
1	219107	NO6.5/8 INCH LG.POZI-PAN.SCREW.Z/PL.PLASTITE	6	
2	227564	PLUG LOCATION CLAMP	1	
3	227635	SWITCH MOUNTING BRACKET (1 SWITCH)	1	
4	220582	GREEN ROCKER SWITCH (WHITE PRINT) 0-1	1	
5	219047	M5 X 10MM LONG POZI PAN SEMS SCREW	8	
6	206006	CABLE REELING HOOK	1	
7	203005	TOP FELT	1	
8	203009	SIDE FELT INSULATION	1	
9	203020	POD SIDE FELT	1	
10	227883	NOISE REDUCTION POD	1	
11	208003	115MM LONG ALUMINIUM SPACER	4	
12	219876	1/4 X 3/4 X 16G PLAIN WASHER TABLE 5 ZINC PLATED	4	
13	206260	AIR DIFFUSER PAD	1	
14	225064	OUTLET GRILLE	1	
15	227637	CABLE CLIP	1	
16	227636	STRAIN RELIEF	1	
17	227632	TERMINAL COVER & CLAMP	1	
18	206562	CONTACT PIN	2	
19	220142	SUPPRESSOR ASSEMBLY	1	
20	219090	M4 X 8MM LONG POZI PAN SEMS SCREW	2	
	236013	10.0MT X 1MM X 2 CORE CABLE (SOCKET + PLUG) EURO	1	
21	401348	BLACK BOTTOM MOTOR HOUSING	1	
22	237700	MOTOR SPACER	1	
23	227885	MOUNTING RUBBER	2	
24	904996	HANDLE BASE 2 INSERTS	1	
25	604151	AIR DIFFUSER FOR BLOWER TYPES (NQS)	1	
26	205640	230V 2 STAGE 800W ECO THRO FLOW FAN MOTOR (DL2803T) TCO	1	
	205740	230V 2 STAGE 600W ECO THRO FLOW FAN MOTOR (DL2603T) TCO	1	
27	236045	10.0M X 1.00MM X 3 CORE CABLE (UK PLUG)	1	CONTACT NUMATIC FOR MORE DETAILS IF REQUIRED
	236034	10.0M X 1.00MM X 2 CORE CABLE (EURO PLUG)	1	
28	207003	MICROFILTER CARTRIDGE	1	
29	219041	No8 X 3/4 INCH LONG POZI PAN SCREW	4	
30	219462	RUBBER WASHER	4	
31	227165	4.67MM LONG SPACER	4	
32	227629	SWITCH MOUNTING BRACKET	1	
33	220243	SWITCH.SPDT.RKR.HV	1	
34	220552	RED ROCKER SWITCH (WHITE PRINT)	1	
35	401248	BLACK BOTTOM MOTOR HOUSING	1	
36	401005	SPUN CUP BLACK	1	
37	220078	BRASS EARTHING SPACER	1	USED ON 3-CORE MACHINES ONLY
38	902207	M4 X 25MM LG 'STETS' SCREW	1	USED ON 3-CORE MACHINES ONLY
39	401194	NVQ/NQS HEAD TOP PAINTED BLACK	1	
40	225136	NVQ TOP MOTOR HOUSING (PLASTIC) AMETEK MOTOR	1	
41	904816	HANDLE COVER 1-SWITCH 2 POLE 10A	1	
42	236009	10.0M X 1.00MM X 2 CORE NUCABLE (UK PLUG)	1	
43	230097	AXIAL FERRITE BEAD	2	
44	904824	HANDLE COVER 2-SWITCH 2 POLE 10A	1	
45	227882	BOTTOM MOTOR GASKET	1	
46	206001	METAL HOSE CONNECTOR	1	
47	301218	470 HEAD TOP + BLOWER	1	
48	904832	HANDLE COVER 2-SWITCH HARD WIRED	1	

FOR WIRING DIAGRAMS PLEASE SEE DOC-21993 (REFER ONLY TO THE LATEST VERSION) OR NUMATIC WEBSITE